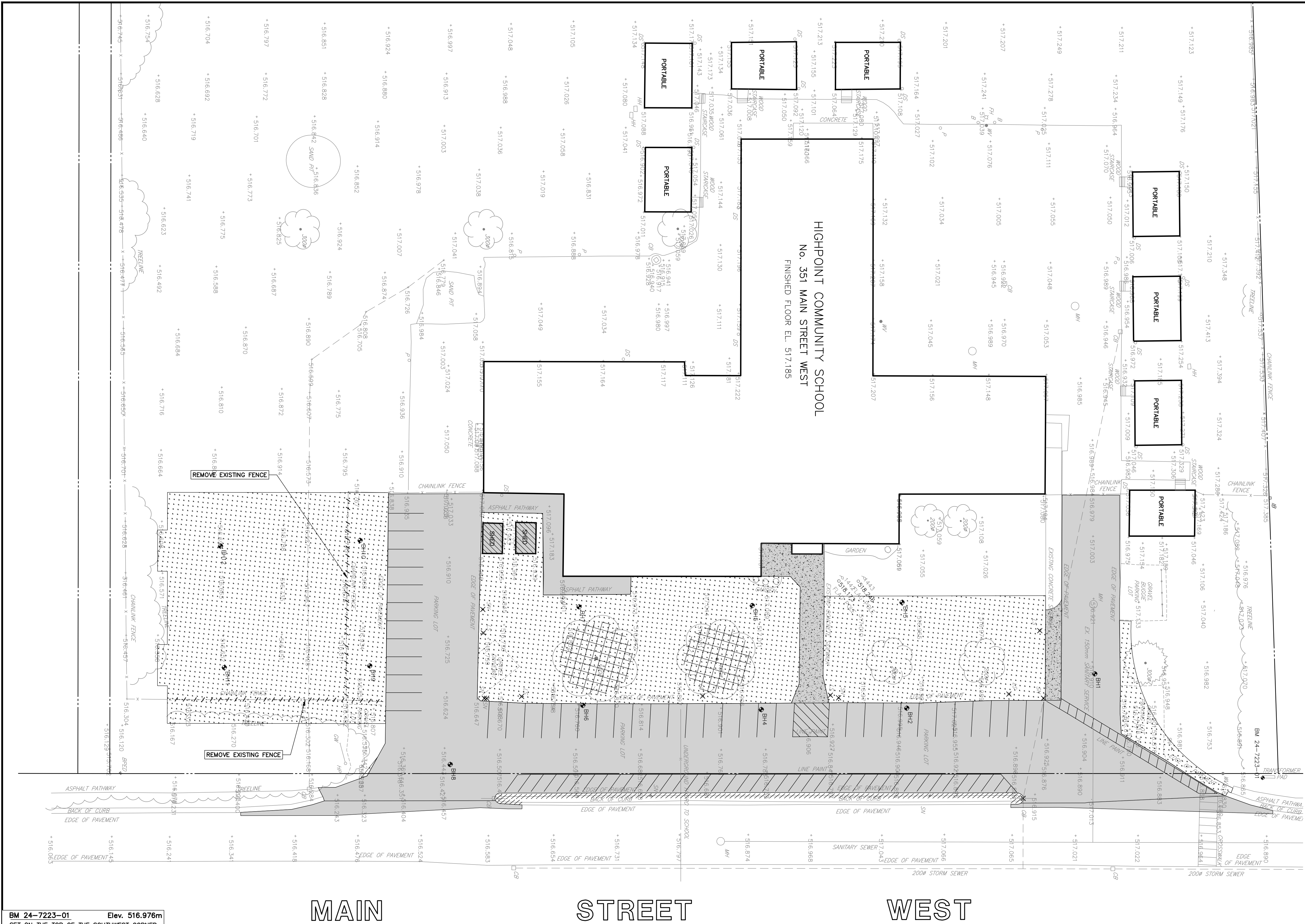


- LEGEND:
- DECIDUOUS TREE AND TRUNK DIA.
  - CONIFEROUS TREE AND TRUNK DIA.
  - EXISTING SURFACE ELEVATION
  - BOREHOLE
  - SIGN
  - POST/POLE
  - FIRE HYDRANT
  - WATER VALVE
  - CATCH BASIN
  - MAINTENANCE HOLE
  - HYDRO POLE
  - GUY WIRE
  - HAND HOLE
  - MAIL BOX
  - BOLLARD
  - LIGHT STANDARD
  - BELL PEDESTAL
  - IRON BAR
  - EXISTING CONCRETE SIDEWALK/PAD REMOVAL
  - EXCAVATE TOPSOIL/CLEAR & GRUB
  - REMOVE EXISTING ASPHALT
  - REMOVE EXISTING STRUCTURE
  - REMOVE MISCELLANEOUS OBJECTS
  - REMOVE EXISTING CHAINLINK FENCE
  - REMOVE EXISTING CONCRETE CURB (ALL TYPES)
  - APPROXIMATE LOCATION OF TREE REMOVAL TO 1200mm BELOW GRADE



BM 24-7223-01 Elev. 516.976m  
SET ON THE TOP OF THE SOUTHWEST CORNER OF CONCRETE BELL TRANSFORMER PAD LOCATED AT THE SOUTHEAST CORNER OF THE HIGH POINT PUBLIC SCHOOL PROPERTY AT NO. 351 MAIN STREET WEST.

PRELIMINARY

DISCLAIMERS:  
1. ALL EXISTING ELEVATIONS & DIMENSIONS TO BE CONFIRMED ON SITE. THE LOCATION OF UTILITIES IS APPROXIMATE ONLY AND SHOULD BE DETERMINED BY CONSULTING THE MUNICIPAL AUTHORITIES AND UTILITY COMPANIES CONCERNED. THE CONTRACTOR SHALL PROVE THE LOCATION OF UTILITIES AND SHALL BE RESPONSIBLE FOR ADEQUATE PROTECTION AGAINST DAMAGE.

No	DATE	REVISION	INITIAL
2	MAR 2025	SITE PLAN APPROVAL	P.F.Z.
1	MAR 2025	ISSUED FOR REVIEW	P.F.Z.

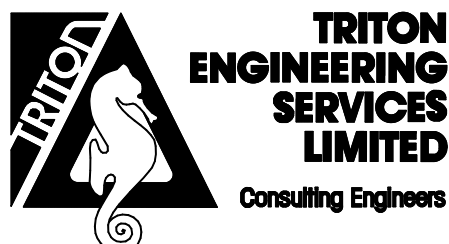
PRELIMINARY

SITE PLAN OF  
HIGHPOINT COMMUNITY SCHOOL  
SOUTHGATE/DUNDALK

BLUEWATER DISTRICT SCHOOL BOARD  
P.O. BOX 190, 351 1st AVENUE NORTH  
CHESLEY, ONTARIO N0G 1L0

REMOVALS  
PLAN

PROJECT No	A7223
DESIGNED BY:	M.B.W.
CHECKED BY:	D.P.S.
APPROVED BY:	P.F.Z.
DATE:	NOVEMBER 2024



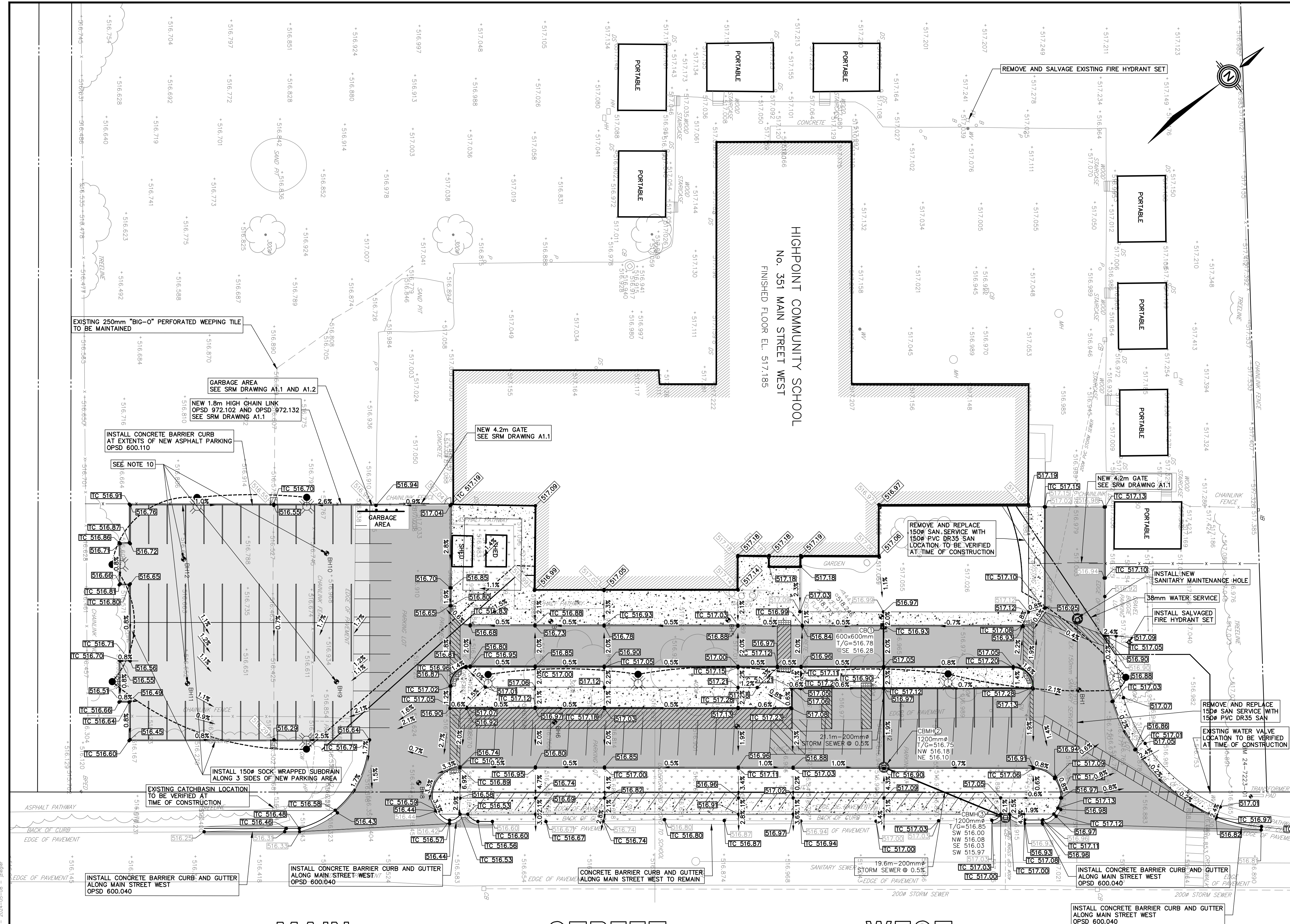
PRELIMINARY

SCALE:  
H: 1:300 H: 1:600  
(0.5"=1' (12"=1'))  
UNLESS OTHERWISE SHOWN

DRAWING  
NUMBER

01





BM 24-7223-01 Elev. 516.976m  
SET ON THE TOP OF THE SOUTHWEST CORNER OF CONCRETE BELL TRANSFORMER PAD LOCATED AT THE SOUTHEAST CORNER OF THE HIGH POINT PUBLIC SCHOOL PROPERTY AT NO. 351 MAIN STREET WEST.

PRELIMINARY

DISCLAIMERS:  
1. ALL EXISTING ELEVATIONS & DIMENSIONS TO BE CONFIRMED ON SITE. THE LOCATION OF UTILITIES IS APPROXIMATE ONLY AND SHOULD BE DETERMINED BY CONSULTING THE MUNICIPAL AUTHORITIES AND UTILITY COMPANIES CONCERNED. THE CONTRACTOR SHALL PROVE THE LOCATION OF UTILITIES AND SHALL BE RESPONSIBLE FOR ADEQUATE PROTECTION AGAINST DAMAGE.

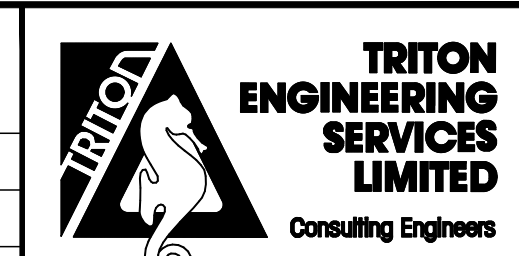
No	DATE	REVISION	INITIAL
2	MAR 2025	SITE PLAN APPROVAL	P.F.Z.
1	MAR 2025	ISSUED FOR REVIEW	P.F.Z.

PRELIMINARY

SITE PLAN OF  
HIGHPOINT COMMUNITY SCHOOL  
SOUTHGATE/DUNDALK

BLUEWATER DISTRICT SCHOOL BOARD  
P.O. BOX 190, 351 1st AVENUE NORTH  
CHESLEY, ONTARIO N0G 1L0  
  
GRADING AND SERVICING  
PLAN

PROJECT No	A7223
DESIGNED BY:	M.B.W.
CHECKED BY:	D.P.S.
APPROVED BY:	P.F.Z.
DATE:	NOVEMBER 2024



SCALE:  
H: 1:300 H: 1:600  
(06/24) (17/21)  
UNLESS OTHERWISE SHOWN  
  
DRAWING  
NUMBER  
**02**

- LEGEND:**
- DECIDUOUS TREE AND TRUNK DIA.
  - CONIFEROUS TREE AND TRUNK DIA.
  - EXISTING SURFACE ELEVATION
  - BOREHOLE
  - SIGN
  - POST/POLE
  - FIRE HYDRANT
  - WATER VALVE
  - CATCH BASIN
  - MAINTENANCE HOLE
  - HYDRO POLE
  - GUY WIRE
  - HAND HOLE
  - MAIL BOX
  - BOLLARD
  - LIGHT STANDARD
  - BELL PEDESTAL
  - IRON BAR
  - DOWN SPOUT
  - NEW ASPHALT c/w FULL DEPTH EXCAVATION (LIGHT DUTY)
  - NEW ASPHALT c/w FULL DEPTH EXCAVATION (HEAVY DUTY)
  - NEW CONCRETE SIDEWALK/PAD
  - PROPOSED TOPSOIL & SOD
  - PROPOSED ELEVATION
  - PROPOSED TOP OF CURB ELEVATION
  - NEW TRAFFIC DIRECTIONAL ARROWS
  - PROPOSED PAVEMENT MARKINGS
  - PROPOSED TACTILE PLATES
  - CONCRETE BARRIER CURB AS PER OPSD 600.110

- GRADING NOTES:**
- GRADING TO BE IN ACCORDANCE WITH OPSD.MUNI 206.
  - REMOVALS TO BE CARRIED OUT IN ACCORDANCE WITH OPSD.MUNI 510.
  - ALL EXCAVATED MATERIAL SHALL BECOME THE PROPERTY OF THE CONTRACTOR, AND THE CONTRACTOR'S PRICE FOR THE ITEM SHALL INCLUDE LOADING, HAULING, DUMPING AND GRADING. THE CONTRACTOR'S MANAGEMENT OF EXCESS MATERIALS SHALL BE IN ACCORDANCE WITH OPSD.MUNI 180, ONTARIO REGULATION 153/04 AND ONTARIO REGULATION 406/19 UNDER THE ENVIRONMENTAL PROTECTION ACT(EPA) AND THE RULES FOR SOIL MANAGEMENT AND EXCESS SOIL QUALITY STANDARDS(SOIL RULES) THAT FORM PART OF O.REG. 406/19. ON-SITE AND EXCESS SOIL MANAGEMENT IS GOVERNED BY O.REG. 153/04 AND O.REG. 406/19 UNDER THE EPA. WHEN THE VOLUME OF EXCESS SOIL TO BE REMOVED FROM THE PROJECT AREA IS DETERMINED TO BE 350m<sup>3</sup> OR LESS, THE SOIL QUALITY STANDARD TABLES FOR THE SOIL ARE GOVERNED BY O.REG. 153/04. WHEN THE EXCESS SOIL EXCEEDS 350m<sup>3</sup>, THE SOIL QUALITY STANDARD TABLES FOR THE SOIL ARE GOVERNED BY O.REG. 406/19.
  - GRANULAR 'A' BASE TO BE IN ACCORDANCE WITH OPSD.MUNI 314 AND OPSD.MUNI 1010, COMPACTED TO 100% SPMD IN ACCORDANCE WITH OPSD.MUNI 501.
  - HOT MIX ASPHALT TO BE IN ACCORDANCE WITH OPSD.MUNI 310 AND 1150, COMPACTED TO 92% MAXIMUM RELATIVE DENSITY.
  - ASPHALT BINDER TO BE PGAC 58-28 IN ACCORDANCE WITH OPSD.MUNI 1003.
  - CONCRETE SIDEWALK TO BE IN ACCORDANCE WITH OPSD.MUNI. 351. 150mm GRANULAR 'A' BASE TO BE INCLUDED AS PART OF SIDEWALK ITEM.
  - ALL SEDIMENT AND EROSION CONTROL MEASURES SHALL BE INSTALLED AND MAINTAINED IN ACCORDANCE WITH OPSD.MUNI 805, AND SHALL BE REMOVED FOLLOWING STABILIZATION OF ADJACENT SOILS.
  - TACTILE PLATES TO BE IN ACCORDANCE WITH OPSD 310.039 AND OPSD 310.033.
- SEWER NOTES:**
- SEWERS AND STRUCTURES TO BE INSTALLED IN ACCORDANCE WITH OPSD.MUNI 410 AND 407.
  - TRENCHING, BACKFILLING AND COMPACTING TO BE IN ACCORDANCE WITH OPSD.MUNI 401 AND 402.
  - SEWER PIPE MATERIAL AND BEDDING TO BE INSTALLED AS PER OPSD 802.030.
  - ALL BEDDING AND COVER MATERIAL TO BE GRANULAR 'A' COMPACTED TO 95% SPMD.
  - RESTORATION BEYOND LIMITS OF SITE GRADING TO BE IN ACCORDANCE WITH OPSD.MUNI 492.
- GENERAL NOTES:**
- THE LOCATION OF UTILITIES IS APPROXIMATE ONLY AND SHOULD BE DETERMINED BY CONSULTING THE MUNICIPAL AUTHORITIES AND UTILITY COMPANIES CONCERNED. THE CONTRACTOR SHALL PROVE THE LOCATION OF UTILITIES AND SHALL BE RESPONSIBLE FOR ADEQUATE PROTECTION AGAINST DAMAGE.
  - THE CONTRACTOR IS RESPONSIBLE FOR LOCATING AND PROTECTING ALL EXISTING UTILITIES PRIOR TO AND DURING CONSTRUCTION.
  - THE CONTRACTOR SHALL BE RESPONSIBLE TO VERIFY ALL DIMENSIONS AND INVERTS/OVERTS FOR STORM (INCLUDING SUBDRAIN). THE CONTRACTOR IS ALSO RESPONSIBLE TO VERIFY ALL EXISTING ROAD AND PROPOSED FINISHED GRADES FOR THE SITE. IF THERE IS ANY DISCREPANCY, THE CONTRACTOR SHALL INFORM THE ENGINEER IMMEDIATELY.
  - THE CONTRACTOR SHALL BE RESPONSIBLE TO CONTROL AND CLEAN ANY MUD AND DEBRIS TRACKED ONTO PUBLIC ROADWAYS. DUST SHALL BE SWEEPED AND/OR CONTROLLED BY WATER AS REQUIRED.
  - ALL WORKS TO BE COMPLETED IN ACCORDANCE WITH THE LATEST ONTARIO PROVINCIAL STANDARDS AND SPECIFICATIONS (OPSS).
  - ALL CONSTRUCTION WORK IS TO BE CARRIED OUT IN ACCORDANCE WITH THE REQUIREMENTS OF THE OCCUPATIONAL HEALTH AND SAFETY ACT AND REGULATIONS FOR CONSTRUCTION PROJECTS.
  - BASE PLAN ELEVATIONS AND SITE BENCHMARK ELEVATIONS PROVIDED BY TRITON ENGINEERING SERVICES LIMITED.
  - ALL DIMENSIONS ARE IN METRES UNLESS NOTED OTHERWISE.
  - PAVEMENT MARKING TO BE WATER-BORNE TRAFFIC PAINT IN ACCORDANCE WITH OPSD 710 AND 1716. ALL PAINT LINES SHALL RECEIVE A DOUBLE APPLICATION.
  - TOPSOIL BELOW PROPOSED ASPHALT SURFACES TO BE REMOVED AND DISPOSED OFFSITE BY CONTRACTOR.CONTRACTOR TO REVIEW GEOTECHNICAL INVESTIGATION PREPARED BY CMT ENGINEERING INC. PROJECT FILE NO. 24-875.R01, DATED JANUARY 22, 2025, AND CHEMICAL ANALYSIS 24-875.R02 DATED JANUARY 27, 2025, AS PART OF THIS TENDER. FOR TENDERING PURPOSES THE CONTRACTOR IS TO ASSUME A TOTAL REMOVAL QUANTITY OF 2000m<sup>3</sup> AND WILL INCLUDE THE DISPOSAL OF TOPSOIL IN THE PRICE PER m<sup>3</sup>. CONTRACTOR TO SUPPLY, PLACE AND COMPACT SELECT FILL TO SUBGRADE ELEVATION.
  - REFER TO DRAWINGS E1.1, E1.2 AND E1.3 FOR ELECTRICAL DESIGN.
  - ALL WATERMAIN, SANITARY, STORM AND ALL NECESSARY APPURTENANCES TO CONFORM TO TOWNSHIP OF SOUTHGATE MUNICIPAL SERVING STANDARDS.
- SEDIMENT AND EROSION CONTROL:**
- CONTRACTOR IS RESPONSIBLE TO INSPECT, MAINTAIN, REPLACE, AND SUPPLEMENT SEDIMENT AND EROSION CONTROLS IN ORDER TO PREVENT SEDIMENT FROM LEAVING THE CONSTRUCTION SITE AND CONTROL ON AND OFF SITE EROSION.
  - FOLLOWING COMPLETION OF PARKING AREAS AND ENTRANCE ROADS, DESIGNATED LANDSCAPE AREAS ARE TO BE FINE GRADED, TOPSOILED, AND SODDED (MIN. DEPTH 150mm).

- DEPTH OF MATERIALS: PARKING AREAS (HEAVY)**
- SURFACE COURSE 50mm HL3
  - BASE COURSE 60mm HL4
  - GRANULAR 'A' 150mm
  - GRANULAR 'B' 450mm
- DEPTH OF MATERIALS: PARKING AREAS (LIGHT)**
- SURFACE COURSE 40mm HL3
  - BASE COURSE 50mm HL4
  - GRANULAR 'A' 150mm
  - GRANULAR 'B' 400mm