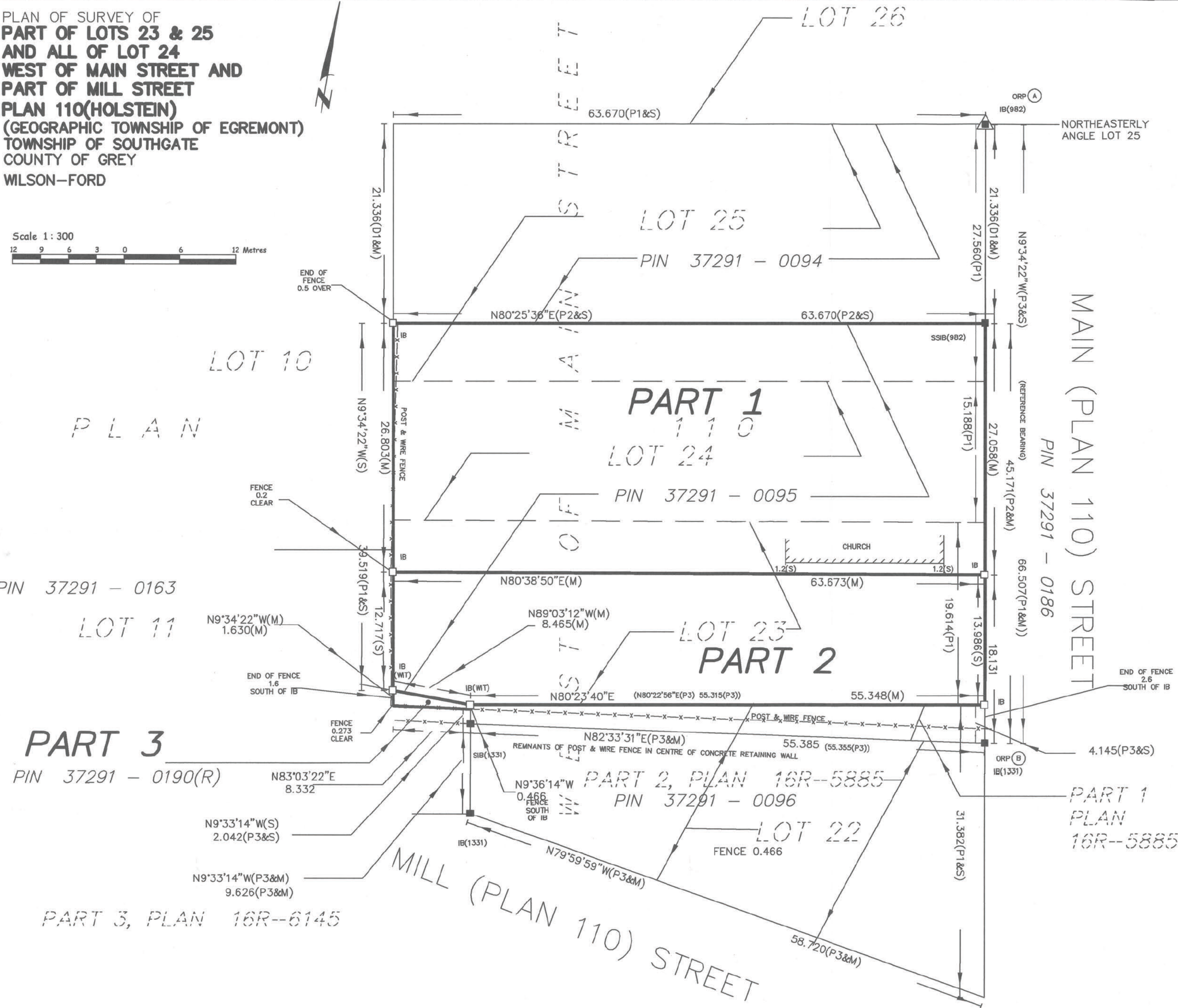


PLAN OF SURVEY OF
PART OF LOTS 23 & 25
AND ALL OF LOT 24
WEST OF MAIN STREET AND
PART OF MILL STREET
PLAN 110(HOLSTEIN)
(GEOGRAPHIC TOWNSHIP OF EGREMONT)
TOWNSHIP OF SOUTHGATE
COUNTY OF GREY
WILSON-FORD



I REQUIRE THIS PLAN TO BE
DEPOSITED UNDER THE LAND TITLES
ACT AND THE REGISTRY ACT.

11 SEPTEMBER,2017

"GREG FORD"

GREG FORD, P.Eng(CIVIL)
ONTARIO LAND SURVEYOR

PLAN 16R-10955

RECEIVED AND DEPOSITED

DATE: 15 SEPTEMBER,2017

"K. GILBERT"

REPRESENTATIVE FOR THE LAND
REGISTRAR FOR THE LAND TITLES AND
REGISTRY DIVISION OF GREY (NO.16).

SCHEDULE

PART	LOT	RANGE	PLAN	PIN
1	PART OF 23, 25 & ALL OF 24	WEST OF MAIN STREET	110	PART OF 37291-0095
2	PART OF 23			PART OF 37291-0095
3	PART OF MILL ST		110	ALL OF 37291-0190(R)

PARTS 1 & 2 COMPRISE ALL OF PIN 37291-0095

LEGEND

■	DENOTES	FOUND MONUMENTS
□	"	SET MONUMENTS
IB	"	IRON BAR
SIB	"	STANDARD IRON BAR
SSIB	"	SHORT STANDARD IRON BAR
▲	"	OBSERVED REFERENCE POINT
PIN	"	PROPERTY IDENTIFICATION NUMBER
P1	"	ALL PINS SHOWN ARE LAND TITLES UNLESS NOTED OTHERWISE
P2	"	PLAN 110
P3	"	PLAN BY HARRY R. WHALE INC. FILE 87-4626
P4	"	PLAN 16R-5885
D1	"	PLAN 16R-6145
	"	INST R526231

BEARING NOTE

BEARINGS ARE UTM GRID, DERIVED FROM SIMULTANEOUS GPS OBSERVATIONS
FROM ORP A TO ORP B HAVING A BEARING OF N 9°34'22" W REFERRED TO
THE CENTRAL MERIDIAN 81°00'00" LONGITUDE UTM ZONE 17, NAD83 (CSRS)(2010).

FOR BEARING COMPARISONS, A ROTATION OF 0°22'24"CCW
WAS APPLIED TO BEARINGS ON PLAN 3.

OBSERVED REFERENCE POINTS (ORP'S)DERIVED FROM GPS
OBSERVATIONS USING THE TOPNET NETWORK (RTN) ,UTM
ZONE 17, NAD83 (CSRS)(2010)

COORDINATES TO URBAN ACCURACY PER SEC. 12(2)
OF O. REG. 216/O.

POINT ID	NORTHING	EASTING
ORP (A)	4 878 503.56	519 242.776
ORP (B)	4 878 438.114	

COORDINATES CANNOT, IN THEMSELVES, BE USED TO RE-ESTABLISH
CORNERS OR BOUNDARIES SHOWN ON THIS PLAN.

DISTANCES ON THIS PLAN ARE GROUND AND CAN BE CONVERTED TO GRID
BY MULTIPLYING BY THE COMBINED SCALE FACTOR OF 0.999546.

METRIC CONVERSION

DISTANCES AND COORDINATES SHOWN ON THIS PLAN ARE IN METRES
AND CAN BE CONVERTED TO FEET BY DIVIDING BY 0.3048

SURVEYOR'S CERTIFICATE

I CERTIFY THAT :

- THIS SURVEY AND PLAN ARE CORRECT AND IN ACCORDANCE WITH THE
SURVEYS ACT, THE SURVEYORS ACT, THE LAND TITLES ACT AND THE
REGISTRY ACT AND THE REGULATIONS MADE UNDER THEM.
- THE SURVEY WAS COMPLETED ON THE 23rd DAY OF MAY, 2017.

11 SEPTEMBER,2017

DATE

"GREG FORD"

GREG FORD, P. Eng (CIVIL)
ONTARIO LAND SURVEYOR

WILSON - FORD
Surveying & Engineering

